

# SEEBURGER B2B

## Operational Dashboard For SAP NetWeaver XI/PI

**EDI systems process a wealth of critical business information every day, with near-instantaneous transmission and machine accuracy enabling faster order processing, more accurate fulfillment, and reduced overhead. Businesses that capture, sort, and use that information can leverage it even further, automating customer service, monitoring business trends, and creating a long-term data archive for future reporting.**

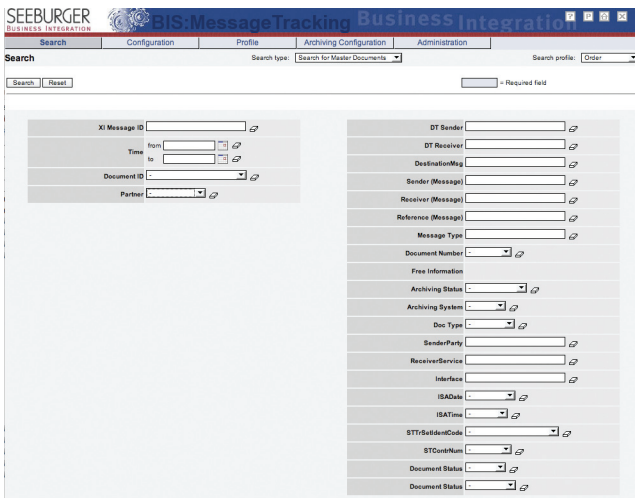
The SEEBURGER B2B Operational Dashboard extends the EDI Adapters for SAP NetWeaver Exchange Infrastructure (XI) and Process Integration (PI) to provide fast, flexible, end-to-end visibility into B2B and EDI documents, enabling businesses to instantly research transactions, pinpoint problems with external business partners, and otherwise

increase control over B2B processes.

The Dashboard speeds the process of locating and retrieving messages and documents by providing “self-service” options to every user account. Within a permission based structure managed by the administrator, users can search for documents by any field or series of fields, including message payload and EDI enveloping. For example, a partner could search for a specific purchase order number, while a sales rep could review “all transactions made by partner X between Monday and Thursday” from a simple, forms-based interface.

Administrators can enhance the Dashboard with a PDF generator or XSLT-based templates to deliver custom report outputs. This ensures that each type of user receives data in a relevant, comprehensible format, so non-technical users can access information they need without technical assistance.

Extensive archiving processes help enterprises comply with corporate or country-specific message retention requirements. The Dashboard provides precise, detailed tracking information of cross-application document exchange, and integrates with existing archiving and data warehouse systems to enable storage of all legally required B2B/EDI information from raw EDI data to the final translation. The Dashboard captures and archives far more data than a standalone ERP / EDI installation, providing greater peace of mind and a more stable basis for regulatory compliance.

The screenshot shows the SEEBURGER B2B Operational Dashboard search interface. At the top, there are tabs for Search, Configuration, Profile, Archiving Configuration, and Administration. The Search tab is active, showing a search type dropdown set to "Search for Master Documents" and a search profile dropdown set to "Order". Below this, there are search and reset buttons. The main search area is divided into two columns of input fields. The left column includes fields for XI Message ID, From, To, Time, Document ID, and Partner. The right column includes fields for DT Sender, DT Receiver, DestinationMsg, Sender (Message), Receiver (Message), Reference (Message), Message Type, Document Number, Free Information, Archiving Status, Archiving System, Doc Type, Sender/Part, Receiver/Service, Interface, ISADate, ISATime, STTRelatedCode, STContNum, Document Status, and Document Status. Each field has a small icon to its right, likely indicating a help or validation function.

**Figure 1:** The B2B Operational Dashboard allows users to search documents and EDI payload with a simple, forms-based “self-service” interface.

# SEEBURGER B2B

## Operational Dashboard For SAP NetWeaver XI/PI

### One View

The B2B Operational Dashboard provides a single view of all relevant inbound and outbound e-business status messages including: ERP processing status information, such as whether a particular purchase order has been posted, or whether a particular 997 reconciliation notice has been sent by the trading partner. This single view is made possible through the Dashboard's flexible data design capabilities and easily customizable user interface.

### Enhanced Search and Ad-Hoc Reporting:

- User-configurable interface and query results.
- Pre-defined search criteria with a simple customizing framework.
- Sub-group differentiation, providing custom interfaces to any number of users (e.g., "Western Territory Customer Support").

### Expanded SAP XI/PI EDI Operational Capability:

- Admins can call the Data Archive during inbound and outbound EDI processes as a cross-reference table to complete EDI processes.
- Detailed reporting down to the envelope and document level within a transaction.
- Monitor split functions and step by step process within EDI sequence module.

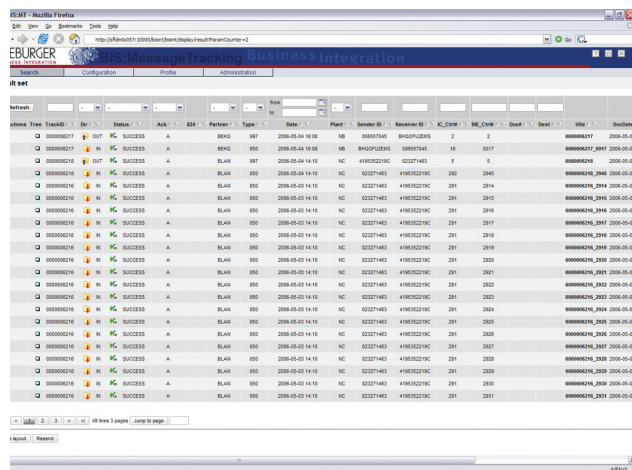


Figure 2: The B2B Operational Dashboard provides customizable, user-sortable search results.

- De-duplication on inbound documents ensure systems don't receive and post the same document twice, and ISA Counter reports to ensure that no transactions are missing.

### Fully Integrated Into SAP XI/PI EDI Adapters:

- Full integration within the EDI communication channels for complete access to raw EDI data, as well as corresponding XML documents and status messages.
- No additional database is required for a standard implementation: the core solution uses SAP XI/PI tables
- User defined functions are integrated in the SAP XI /PI mapping templates to capture payload information such as PO Number, Dollar Amounts, Partner ID, etc...
- Pre-defined mapping process to create standard index files for multiple document types, including Purchase Orders, Invoices, Advanced Shipping Notices.

### Fulfill EDI Archiving Regulatory Requirements:

- Pre-defined indexing processes for several archiving system interfaces such as IXOS or easyArchive.
- Configuration of multiple archiving processes for multiple divisions or regional locations.
- Fulfills Ansi X12 997 and Edifact Control Message

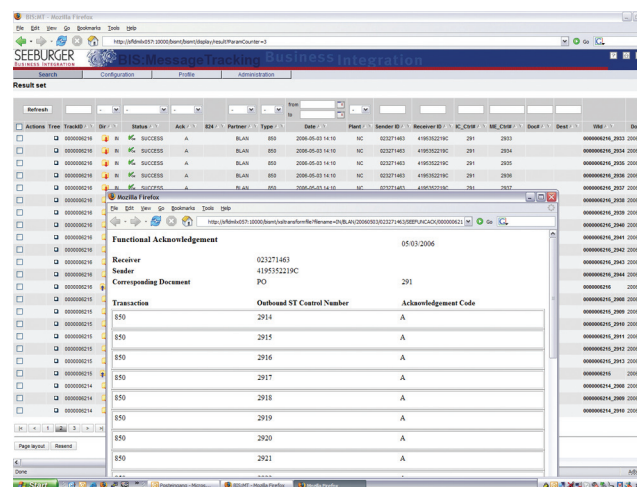


Figure 3: Admins can use XSLT templates to create custom-user-friendly report outputs.