

WIN:EPX-compact

Exchanging engineering data quickly and economically

Challenges

Successful partnerships in the automobile industry require that the processes between the partners run quickly and smoothly. Shorter development cycles, development projects throughout various locations as well as increasing data volumes demand suitable solutions, in order to satisfy the constantly growing standards in the area of product development.

Solution

With WIN:EPX-compact, SEEBURGER offers a simple und flexible solution for the fast and convenient exchange of engineering and product data with business partners.

Benefits

Interchanging CAD Data Easily and Rapidly

The concise and user-friendly application enables the constructor to send the necessary construction and meta data. With just a few clicks of the mouse, the data can be sent simply and quickly.

Modular Extensions and Upgrades

WIN:EPX-compact can be put together and/or extended/upgraded (in accordance with your requirements and business relationships), with the necessary modules. With that, you have the option to put the system together in accordance with your needs, from the simplest »beginners« version to the client system with ENGDAT and e-mail notification.

WIN:EPX-compact Base

The WIN:EPX-compact Base offers you a concise and easy-to-use operator interface. Here, the log books for send-and-receive processes are managed, along with the management of master data and the further processing of received files. In accordance with the VDA/ODETTE recommendation, WIN:EPX-compact also supports GZIP compression and decompression.

Communication

The communications modules can be freely combined. According to your needs, you can equip the WIN:EPX-compact system with the protocols OFTP-ISDN and OFTP-TCP/IP, whereby you can chose between the 1- or 2-channel variation. In accordance with VDA 4914/2 ODETTE, the automatic restart in case of an interrupted connection is also supported.

ENGDAT

In the meantime, many companies require data exchange via ENGDAT. In this process, important information on the sender, recipient and the user/reference files is transmitted in machine-readable format (EDIFACT syntax). With the ENGDAT extension, you fulfil this standard in accordance with VDA 4951.

WIN:EPX-compact

Features and Benefits

Compact Client

With the help of the Compact-Client upgrade, you can extend the WIN:EPX-compact desktop software to a client-server solution with up to three workstations. With that, the users can send their data directly from the workstation to the partner, and/or retrieve and process those files already received. The administrative rights continue to be incumbent upon only the »server«-application.

E-mail Notification

For each file received, the Mail Message Extension ensures that you are promptly informed. The Mail Message System ensures that you will be promptly notified what data are received by the OFTP. You automatically receive a detailed e-mail with information on partners, file name, directory, the protocol used and a time stamp. With that, no file received goes unnoticed and not processed. Furthermore, you have the option to conduct a recorded data exchange by e-mail directly from WIN:epx-compact.

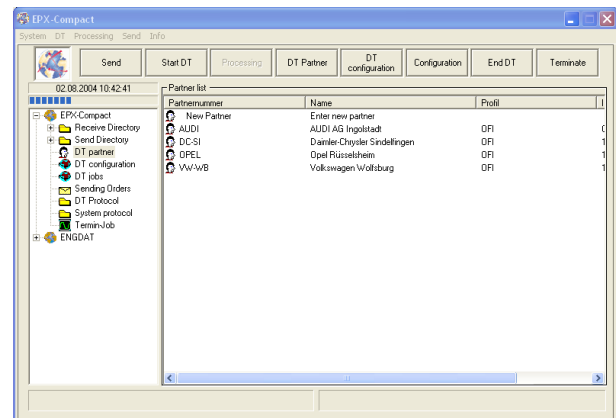
Safe Data Interchange

At SEEBURGER, we capitalise on security; therefore, we will certainly also offer you the necessary WIN:epx-compact upgrades for the encrypted CAD data exchange with your partners. With the help of the Encryption Extensions, the respective encryption tools can be integrated for fully automated operation. This is how the Volkswagen AG, for example,

regulates the use of the ComSecure Software since January 2004. The VDA (Automobile Industry Association) recommends GnuPrivacyGuard for encryption.

Advantages

- Simple self-installation
- Simple operation
- Available immediately
- Multilingual
- Unlimited number of communication partners
- Fortification of your position as supplier/communication partner
- Investment protection: With an existing software upkeep contract, you just pay the difference for an upgrade to BIS:epx



WIN:EPX-compact

Fax: +49(0)7252/96-2211

Engineering Data Exchange (CAx) with ODETTE/ENGDAT/ENGPART

For a fast, secure and cost-effective introduction to OFTP2, SEEBURGER offers WIN:EPX-compact. One single solution to connect all OEM-/Partner systems.

Article No.	Product name	Price in €	Upkeep price p. a. € at Basic Level
<input type="checkbox"/> EC1000	WIN:epx-compact Base	800,-	96,-
<input type="checkbox"/> EC1010	ENGDAT Extension	900,-	108,-
<input type="checkbox"/> EC1021	OFTP ISDN, 1 ISDN B-Channel	450,-	54,-
<input type="checkbox"/> EC1022	OFTP ISDN, 2 ISDN B-Channels	750,-	90,-
<input type="checkbox"/> EC1031	OFTP TCP/IP, 1 Channel	950,-	114,-
<input type="checkbox"/> EC1032	OFTP TCP/IP, 2 Channels	1,550,-	186,-
<input type="checkbox"/> EC1033	OFTP2, 1 Channel	1.470,-	205,-
<input type="checkbox"/> EC1034	OFTP2, 2 Channels	2.300,-	414,-
<input type="checkbox"/> EC1040	ComSecure License <small>Gedas Encryption Software for communication with the VolkswagenGroup; 1st Tier Partners of VW receive this software/license free of charge.</small>	300,-	54,-
<input type="checkbox"/> EC1041	Encryption Extension ComSecure <small>Integration of ComSecure for fully automated operation</small>	600,-	72,-
<input type="checkbox"/> EC1090	GALIA Extension	1,900,-	228,-
<input type="checkbox"/> EC1100	Compact Client 1 WS Win2K/WinXP	550,-	66,-
<input type="checkbox"/> EC1300	Compact Client 3 WS Win2K/WinXP	1,200,-	144,-
<input type="checkbox"/> EC1060	Mail Message Extension	650,-	78,-

- Please contact me regarding a service offer for configuration of OFTP2
- Please contact me regarding a service offer for installation and configuration of software

All prices + VAT valid until 31 December 2012

Hardware requirement: Standard Windows PC Pentium 300 MHz or higher, with 128 MB RAM.
Payment: 20 days net; invoicing takes place upon delivery
Delivery period: 1-3 days

All offers are based on our General Terms and Conditions for Sales, Delivery and Software Support and Maintenance. The license for WIN:EPX-compact-Software incl. all modules and enables to installation on one workstation with one CPU and is valid for ONE juridically independent organisation excluding its branches. The license does not legitimate the use of WIN:epx-compact in a data processing or clearing centres and authorises the use of the software exclusively for the interchange of CAD/CAM data. For VW/Audi, you also need TCP/IP, ComSecure and bintec Router (by using OFTP2, ComSecure ist not needed).

Company	Contact person
Street	Postal Code / City
Phone	e-mail
Signature		

SEEBURGER AG · Edisonstraße 1 · D-75015 Bretten
Phone: +49(0)7252/96-0 · Fax: +49(0)7252/96-2211 · epx-compact@seeburger.de · www.seeburger.com
All product names mentioned are the property of the respective company. © SEEBURGER AG 12/2011

SEEBURGER
BUSINESS INTEGRATION

WIN:EPX-compact

Exchanging construction data quickly and economically

SEEBURGER AG

More than 8,500 satisfied customers worldwide and 25 years' experience have made SEEBURGER a market leader in B2B integration solutions.

The company offers a comprehensive suite of business-to-business integration and Managed File Transfer solutions, including ERP-specific extensions (solution extensions for SAP), industry-specific standard solutions, and managed/cloud services. With an all-encompassing approach consisting of conception, consulting, and implementation of tried and tested software solutions we realize full automation of business processes, thereby achieving maximum savings potential for our customers.

What's more, we offer maintenance and consulting services tailored to our software solutions and training courses at the SEEBURGER Academy. When developing our solution portfolios we work closely with customers and independent partners. SEEBURGER AG was founded in Bretten, Germany in 1986, maintains a long-standing partnership with SAP, and operates 19 global subsidiaries in Europe, Asia, and North America.

SEEBURGER customers benefit from industry expertise and the know-how acquired in projects for companies such as Beiersdorf, Bosch, Coop, Danfoss, EnBW, Heidelberger Druckmaschinen, Hagebau, Hyundai, Lidl, Novartis, Osram, Porsche, Siemens, s.Oliver, Schiesser, SupplyOn, Tetley, VW, Whirlpool, and others.

References (extract)

Alfred Hermann GmbH & Co.
ANDRIS
CAD-Technik
E.G.O.
Fastner GmbH
Formtechnik Osterode
Grohmann Engineering GmbH
Lander Automotive GmbH
MARQUARDT GmbH
Oberhofer GmbH Werkzeugbau
PETA Formenbau GmbH
SAXAS Nutzfahrzeuge Werdau GmbH
TMD Friction Holding GmbH
Vola-Plast
WEFA Singen GmbH

